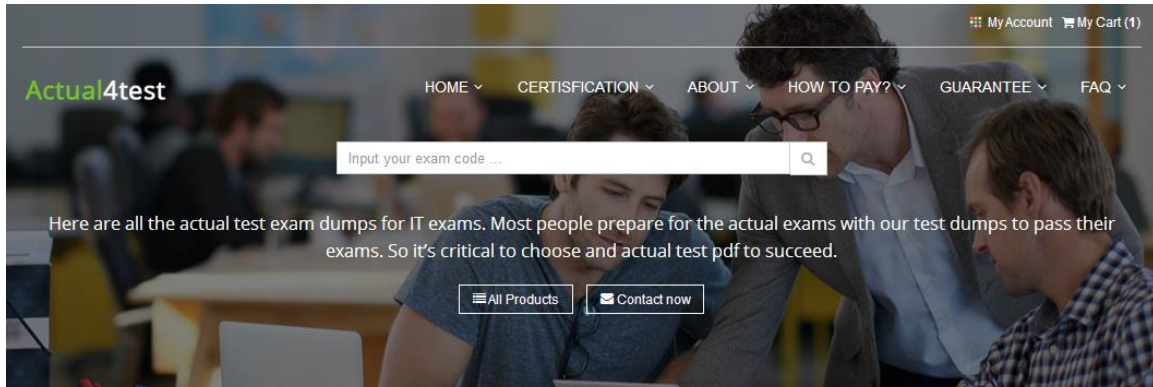


# Actual4Test



My Account My Cart (1)

Actual4test

HOME ▾ CERTIFICATION ▾ ABOUT ▾ HOW TO PAY? ▾ GUARANTEE ▾ FAQ ▾

Input your exam code ...

Here are all the actual test exam dumps for IT exams. Most people prepare for the actual exams with our test dumps to pass their exams. So it's critical to choose and actual test pdf to succeed.

All Products Contact now



#### QUALITY AND VALUE

Actual4test Practice Exams are written to the highest standards of technical accuracy, using only certified subject matter experts and published authors for development - no all dumps.



#### TESTED AND APPROVED

We are committed to the process of vendor and third party approvals. We believe professionals and executives alike deserve the confidence of quality coverage these authorizations provide.



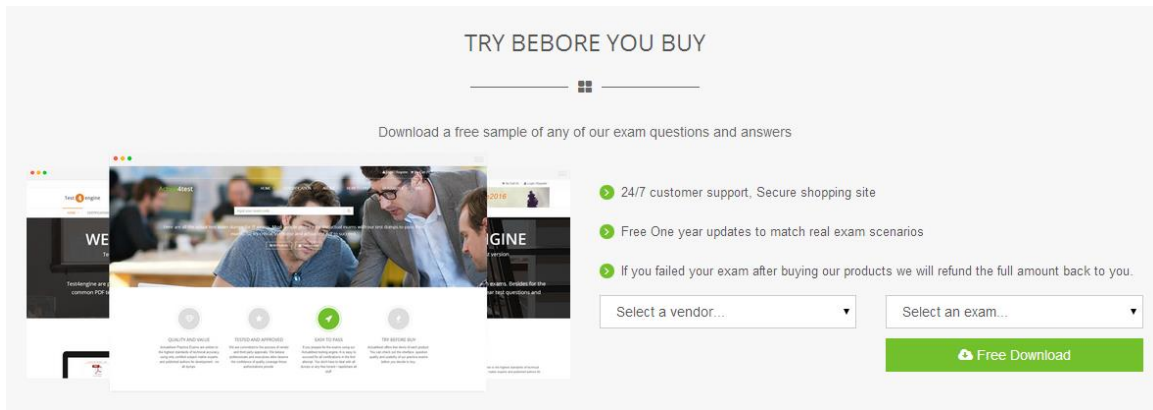
#### EASY TO PASS

If you prepare for the exams using our Actual4test testing engine, it is easy to succeed for all certifications in the first attempt. You don't have to deal with all dumps or any free torrent / rapidshare all stuff.



#### TRY BEFORE BUY

Actual4test offers free demo of each product. You can check out the interface, question quality and usability of our practice exams before you decide to buy.



### TRY BEFORE YOU BUY

Download a free sample of any of our exam questions and answers

- 24/7 customer support, Secure shopping site
- Free One year updates to match real exam scenarios
- If you failed your exam after buying our products we will refund the full amount back to you.

Select a vendor... Select an exam...

Free Download

<http://www.actual4test.com>

Actual4test - actual test exam dumps-pass for IT exams

**Exam** : **70-742**

**Title** : Identity with Windows Server  
2016

**Vendor** : Microsoft

**Version** : DEMO

**NO.1** Your network contains an Active Directory domain named contoso.com.

The domain contains an enterprise root certification authority (CA) on a server that runs Windows Server 2016.

You need to configure the CA to support Online Certificate Status Protocol (OCSP) responders. Which two actions should you perform? Each correct selection presents part of the solution.

NOTE: Each correct selection is worth one point.

- A. Modify the CRL distribution point (CDP) of the CA.
- B. Modify the Authority Information Access (AIA) of the CA.
- C. Add a new certificate template to issue.
- D. Configure an enrollment agent.
- E. Install a standalone subordinate CA.

**Answer:** B,C

Explanation:

Once the OCSP service is configured, we need to configure the OCSP Response Signing template.

This process includes adding an Authority Information Access (AIA) extension and then issuing a new certificate template.

References: <https://www.poweradmin.com/blog/deploying-active-directory-certificate-services-and-online-responder/>

**NO.2** Your network contains an Active Directory forest. The forest contains two domains named litwareinc.com and contoso.com. The contoso.com domain contains two domain controllers named LON-DC01 and LON-DC02. The domain controllers are located in a site named London that is associated to a subnet of 192.168.10.0/24.

You discover that LON-DC02 is not a global catalog server.

You need to configure LON-DC02 as a global catalog server.

What should you do?

- A. From Windows Power Shell, run the Enable-ADOptionalFeature cmdlet.
- B. From Active Directory Sites and Services, modify the NTDS Settings object of the London site.
- C. From the properties of the LON-DC02 computer account in Active Directory Users and Computers modify the NTDS settings.
- D. From the properties of the LON-DC02 computer account in Active Directory Users and Computers, modify the City attribute.

**Answer:** C

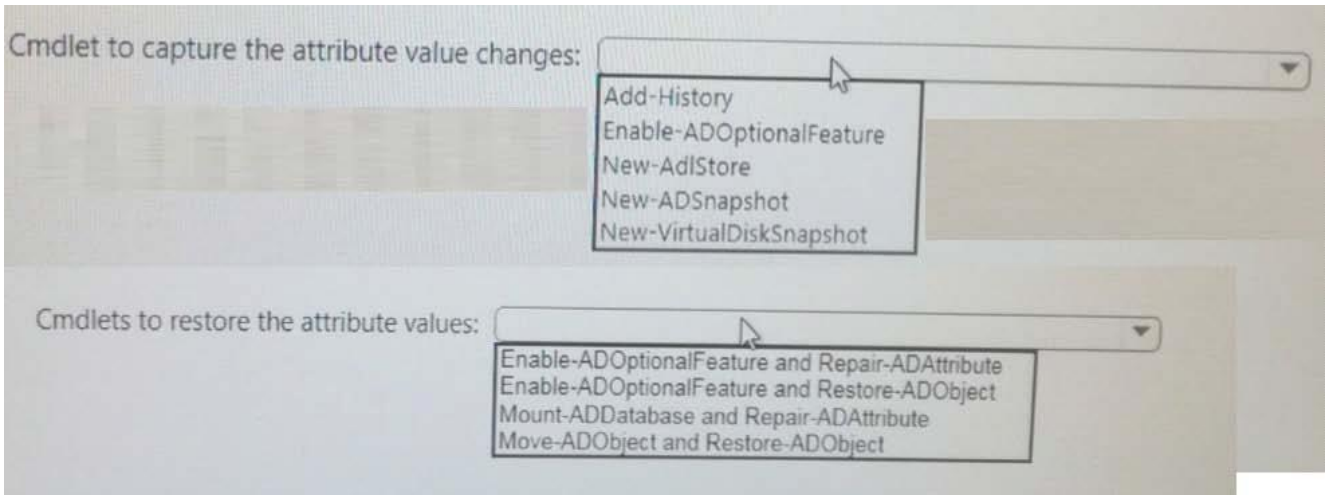
**NO.3** HOTSPOT

Your network contains a single-domain Active Directory forest named contoso.com. The forest functional level is Windows Server 2016. The Active Directory Recycle Bin feature is enabled.

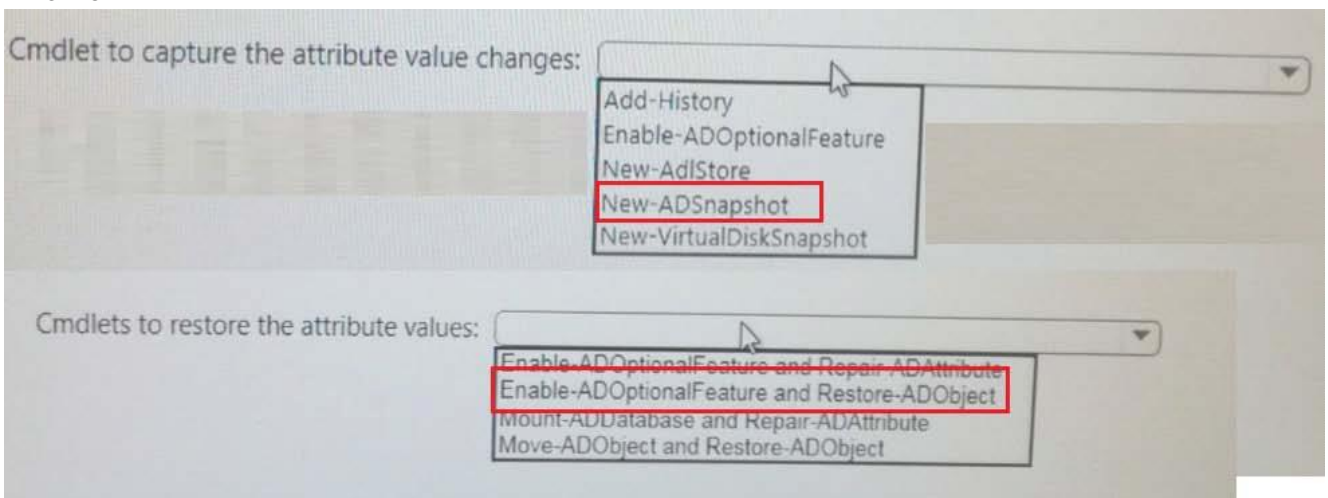
You need to design a procedure to restore the values of user object attributes if the values are changed accidentally.

Which cmdlets should you include in the procedure? To answer, select the appropriate options in the answer area.

NOTE: Each correct selection is worth one point.



**Answer:**



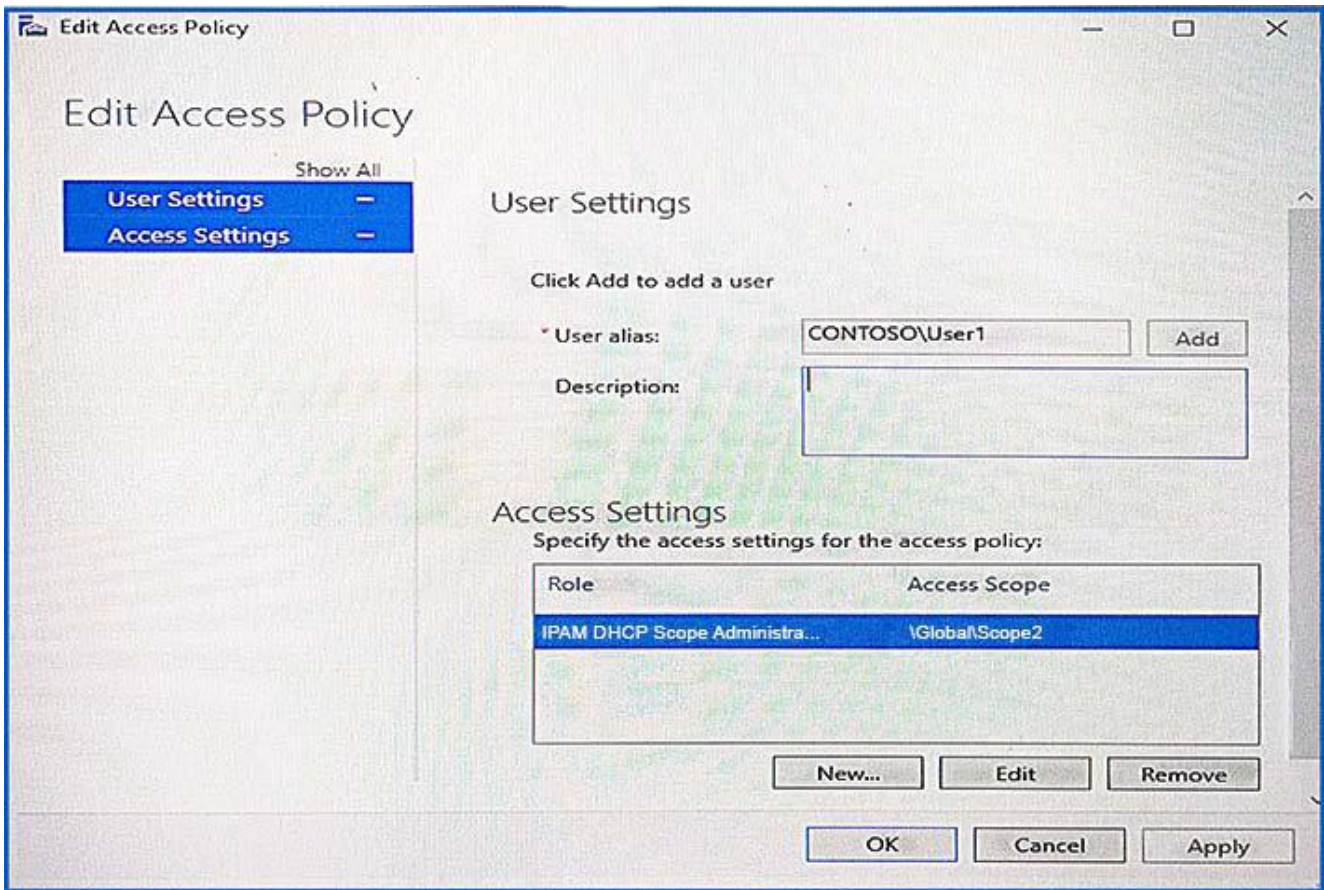
**NO.4 HOTSPOT**

Your network contains an Active Directory domain named contoso.com. The domain contains two servers named Server1 and Server2 that run Windows Server 2016.

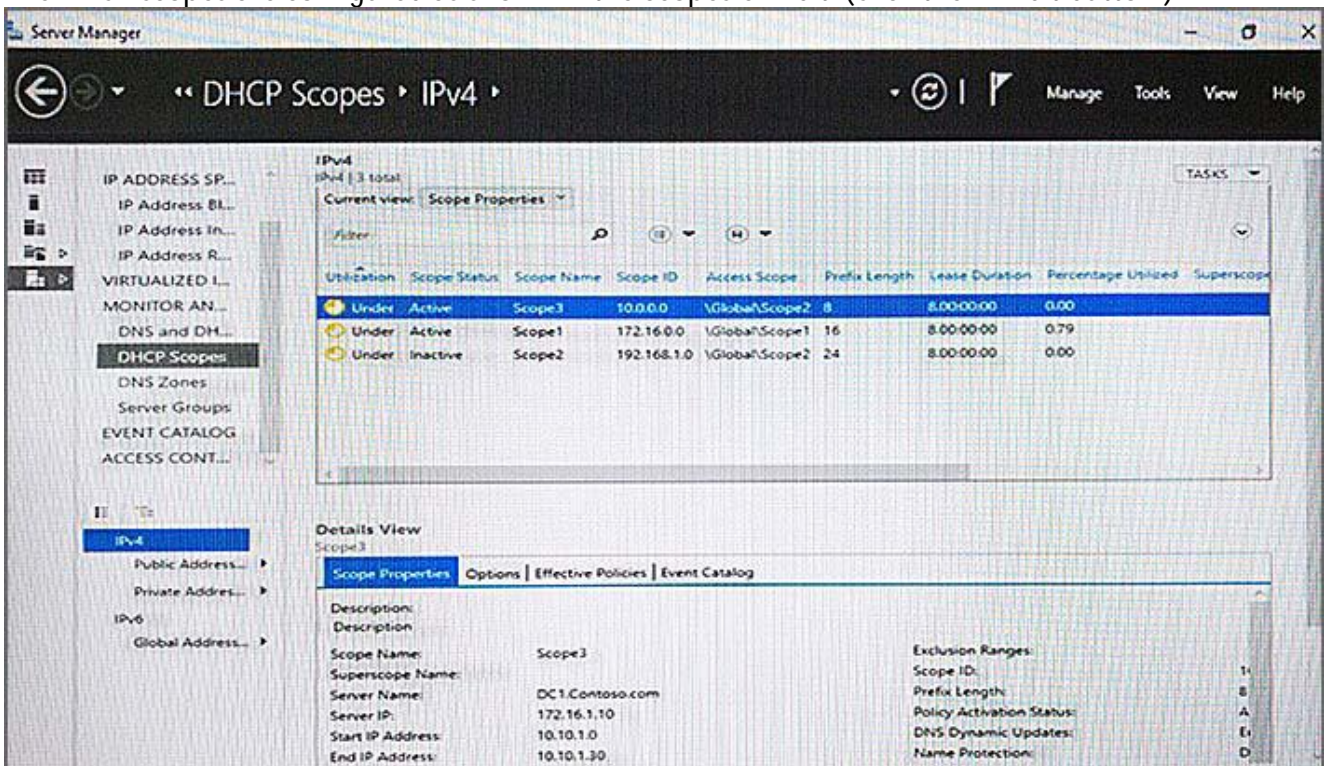
Server1 has IP Address Management (IPAM) installed. Server2 has the DHCP Server role installed. The IPAM server retrieves data from Server2.

The domain has two users named User1 and User2 and a group named Group1. User1 is the only member of Group1.

Server1 has one IPAM access policy. You edit the access policy as shown in the Policy exhibit. (Click the Exhibit button.)



The DHCP scopes are configured as shown in the Scopes exhibit. (Click the Exhibit button.)



For each of the following statements, select Yes if the statement is true. Otherwise, select No.

## Answer Area

Statements	Yes	No
User1 can modify the description of Scope1.	<input type="radio"/>	<input type="radio"/>
User2 can modify the description of Scope1.	<input type="radio"/>	<input type="radio"/>
User1 can modify the description of Scope2.	<input type="radio"/>	<input type="radio"/>

**Answer:**

Statements	Yes	No
User1 can modify the description of Scope1.	<input checked="" type="radio"/>	<input type="radio"/>
User2 can modify the description of Scope1.	<input type="radio"/>	<input checked="" type="radio"/>
User1 can modify the description of Scope2.	<input type="radio"/>	<input checked="" type="radio"/>

**NO.5** You have a server named Server1 that runs Windows Server 2016. You need to configure Server1 as a Web Application Proxy. Which server role or role service should you install on Server1?

- A. Web Server (IIS)
- B. Active Directory Federation Services
- C. DirectAccess and VPN (RAS)
- D. Network Policy and Access Services
- E. Remote Access

**Answer:** E

**NO.6** Your network contains an Active Directory domain named contoso.com. The domain contains a username User1, a group named Group1, and an organizational unit (OU) named OU1.

You need to enable User1 to link Group Policies to OU1.

Solution: From Active Directory Administrative Center, you add User1 to Group1. From ADSI Edit, you grant Group1 Full Control permissions to the "CN=Policies, CN=System, DC=Contoso, DC=com" object.

Does this meet the goal?

- A. Yes

**B. NO**

**Answer:** B

**NO.7** Your network contains an Active Directory domain named contoso.com.

You have a Group Policy object (GPO) named GPO1. GPO1 is linked to an organizational unit (OU) named OU1.

GPO1 contains several corporate desktop restrictions that apply to all computers.

You plan to deploy a printer to the computers in OU1.

You need to ensure that any user who signs in to a computer that runs Windows 10 in OU1 receives the new printer. All of the computers in OU1 must continue to apply the corporate desktop restrictions from GPO1.

What should you configure?

**A.** a computer preference that uses item-level targeting

**B.** a computer preference and WMI filter on GPO1

**C.** a user preference that uses item-level targeting

**D.** a user preference and a WMI filter on GPO1.

**Answer:** C

**NO.8** Your network contains an Active Directory forest named contoso.com. The forest contains a member server named Server1. Server1 has several line-of-business applications. Each application runs as a service that uses the Network Service account. You need to configure the line-of-business applications to run by using a virtual account. What should you do?

**A.** From Windows PowerShell, run the Install-ADServiceAccount cmdlet.

**B.** From Windows PowerShell, run the New-ADServiceAccount cmdlet.

**C.** From the Services console, modify the Log On properties of the services.

**D.** From the Microsoft Application Compatibility Toolkit (ACT), create a shim.

**Answer:** C

**NO.9 DRAG DROP**

Your network contains an Active Directory domain named contoso.com. The domain contains a server named Server1 that runs Windows Server 2016.

You install IP Address Management (IPAM) on Server1.

You need to manually start discovery of servers that IPAM can manage in contoso.com.

Which three cmdlets should you run in sequence? To answer, move the appropriate cmdlets from the list of cmdlets to the answer area and arrange them in the correct order.

**Actions**

Start-ScheduledTask

Invoke-IpamServerProvisioning

Update-IpamServer

Add-IpamSubnet

Add-IpamAddress

Add-IpamDiscoveryDomain

**Answer Area****Answer:****Answer Area**

Invoke-IpamServerProvisioning

Add-IpamDiscoveryDomain

Start-ScheduledTask

**Step 1: Invoke-IpamServerProvisioning**

Choose a provisioning method

The Invoke-IpamGpoProvisioning cmdlet creates and links three group policies specified in the Domain parameter for provisioning required access settings on the server roles managed by the computer running the IP Address Management (IPAM) server.

**Step 2: Add-IpamDiscoveryDomain**

Configure the scope of discovery

The Add-IpamDiscoveryDomain cmdlet adds an Active Directory discovery domain for an IP Address Management (IPAM) server. A discovery domain is a domain that IPAM searches to find infrastructure servers. An IPAM server uses the list of discovery domains to determine what type of servers to add. By default, IPAM discovers all domain controllers, Dynamic Host Configuration Protocol (DHCP) servers, and Domain Name System (DNS) servers.

**Step 3: Start-ScheduledTask**

Start server discovery

To begin discovering servers on the network, click Start server discovery to launch the IPAM ServerDiscovery task or use the Start-ScheduledTask command.

**NO.10** Note: This question is part of a series of questions that present the same scenario. Each question in the series contains a unique solution that might meet the stated goals. Some question sets might have more than one correct solution, while others might not have a correct solution. After you answer a question in this section, you will NOT be able to return to it. As a result, these questions will not appear in the review screen.

You deploy a new Active Directory forest.

You need to ensure that you can create a group Managed Service Account (gMSA) for multiple



member servers.

Solution: From Windows PowerShell on a domain controller, you run the Add-KdsRootKey cmdlet. Does this meet the goal?

A. No

B. Yes

**Answer:** B

### NO.11 HOTSPOT

Your network contains an Active Directory forest named contoso.com.

Your company has a custom application named ERP1. ERP1 uses an Active Directory Lightweight Directory Services (AD LDS) server named Server1 to authenticate users.

You have a member server named Server2 that runs Windows Server 2016. You install the Active Directory Federation Services (AD FS) server role on Server2 and create an AD FS farm.

You need to configure AD FS to authenticate users from the AD LDS server.

Which cmdlets should you run? To answer, select the appropriate options in the answer area.

## Answer Area

First cmdlet to run:

	▼
Add-AdfsRelyingPartyTrust	
New-AdfsLdapServerConnection	
Set-AdfsEndpoint	

Second cmdlet to run:

	▼
Add-AdfsLocalClaimsProviderTrust	
Enable-AdfsRelyingPartyTrust	
Set-AdfsEndpoint	

**Answer:**

First cmdlet to run:

	▼
Add-AdfsRelyingPartyTrust	
New-AdfsLdapServerConnection	
Set-AdfsEndpoint	

Second cmdlet to run:

	▼
Add-AdfsLocalClaimsProviderTrust	
Enable-AdfsRelyingPartyTrust	
Set-AdfsEndpoint	

To configure your AD FSfarm to authenticate users from an LDAP directory, you can complete the following steps:

### Step 1: New-AdfsLdapServerConnection

First, configure a connection to your LDAP directory using the New-AdfsLdapServerConnection cmdlet:

```
$DirectoryCred = Get-Credential
```

```
$vendorDirectory = New-AdfsLdapServerConnection -HostName dirserver -Port 50000 -SslMode None  
- AuthenticationMethod Basic -Credential $DirectoryCred
```

Step 2 (optional):  
Next, you can perform the optional step of mapping LDAP attributes to the existing AD FS claims using the New-AdfsLdapAttributeToClaimMapping cmdlet.

### Step 3: Add-AdfsLocalClaimsProviderTrust

Finally, you must register the LDAP store with AD FS as a local claims provider trust using the Add-AdfsLocalClaimsProviderTrust cmdlet:

```
Add-AdfsLocalClaimsProviderTrust -Name "Vendors" -Identifier "urn:vendors" -Type L References:  
https://technet.microsoft.com/en-us/library/dn823754\(v=ws.11\).aspx
```

**NO.12** Your network contains an Active Directory domain named contoso.com.

You plan to deploy a new Active Directory Rights Management Services (AD RMS) cluster on a server named Server1.

You need to create the AD RMS service account. The solution must use the principle of least privilege. What should you do?

- A.** Create a domain user account and add the account to the Account Operators group in the domain.
- B.** Create a domain user account and add the account to the Domain Users group in the domain
- C.** Create a domain user account and add the account to the Administrators group on Server1.
- D.** Create a local user account on Server1 and add the account to the Administrators group on Server1.

**Answer:** C