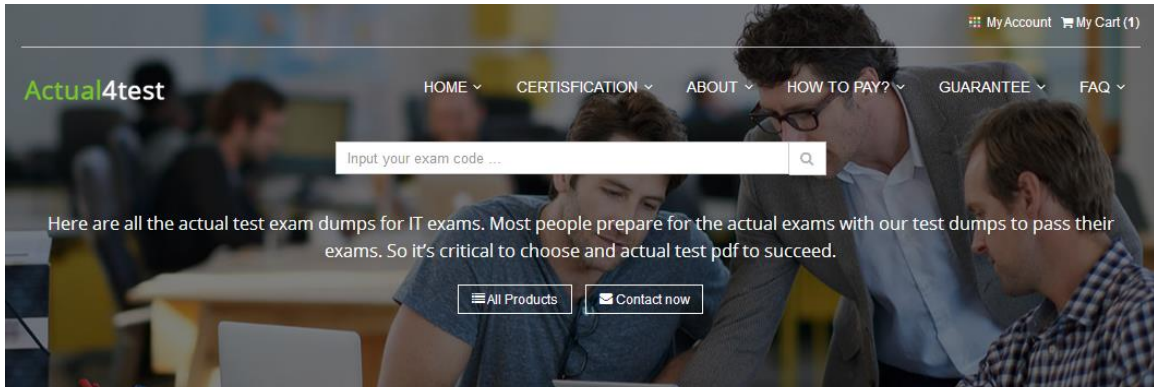


# Actual4Test



My Account My Cart (1)

Actual4test

HOME ▾ CERTIFICATION ▾ ABOUT ▾ HOW TO PAY? ▾ GUARANTEE ▾ FAQ ▾

Input your exam code ...

Here are all the actual test exam dumps for IT exams. Most people prepare for the actual exams with our test dumps to pass their exams. So it's critical to choose and actual test pdf to succeed.

All Products Contact now



#### QUALITY AND VALUE

Actual4test Practice Exams are written to the highest standards of technical accuracy, using only certified subject matter experts and published authors for development - no all dumps.



#### TESTED AND APPROVED

We are committed to the process of vendor and third party approvals. We believe professionals and executives alike deserve the confidence of quality coverage these authorizations provide.



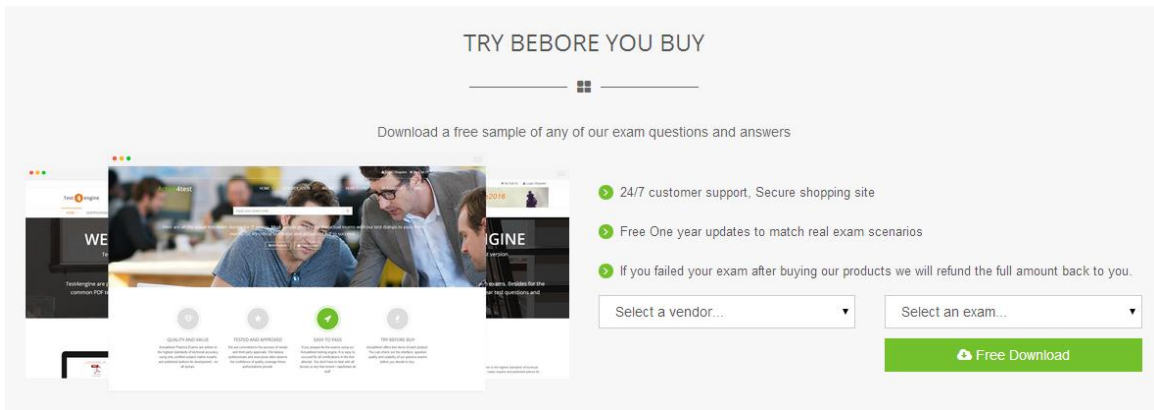
#### EASY TO PASS

If you prepare for the exams using our Actual4test testing engine, it is easy to succeed for all certifications in the first attempt. You don't have to deal with all dumps or any free torrent / rapidshare all stuff.



#### TRY BEFORE BUY

Actual4test offers free demo of each product. You can check out the interface, question quality and usability of our practice exams before you decide to buy.



### TRY BEFORE YOU BUY

Download a free sample of any of our exam questions and answers

- 24/7 customer support. Secure shopping site
- Free One year updates to match real exam scenarios
- If you failed your exam after buying our products we will refund the full amount back to you.

Select a vendor... Select an exam...

Free Download

<http://www.actual4test.com>

Actual4test - actual test exam dumps-pass for IT exams

**Exam** : **70-742**

**Title** : Identity with Windows Server  
2016

**Vendor** : Microsoft

**Version** : DEMO

**NO.1** Your network contains an Active Directory domain named contoso.com.

The user account for a user named User1 is in an organizational unit (OU) named OU1.

You need to enable User1 to sign in as user1@adatum.com.

Solution: From Windows PowerShell, You run Set-ADuser User1 -UserPrincipalName User1@Adatum.com.

Does this meet the goal?

**A.** Yes

**B.** No

**Answer:** A

**NO.2** You have users that access web applications by using HTTPS. The web applications are located on the servers in your perimeter network. The servers use certificates obtained from an enterprise root certification authority (CA). The certificates are generated by using a custom template named WebApps. The certificate revocation list (CRL) is published to Active Directory.

When users attempt to access the web applications from the Internet, the users report that they receive a revocation warning message in their web browser. The users do not receive the message when they access the web applications from the intranet.

You need to ensure that the warning message is not generated when the users attempt to access the web applications from the Internet.

What should you do?

**A.** Install the Certificate Enrollment Web Service role service on a server in the perimeter network.

**B.** Modify the WebApps certificate template, and then issue the certificates used by the web application servers.

**C.** Install the Web Application Proxy role service on a server in the perimeter network. Create a publishing point for the CA.

**D.** Modify the CRL distribution point, and then reissue the certificates used by the web application servers.

**Answer:** C

**NO.3** HOTSPOT

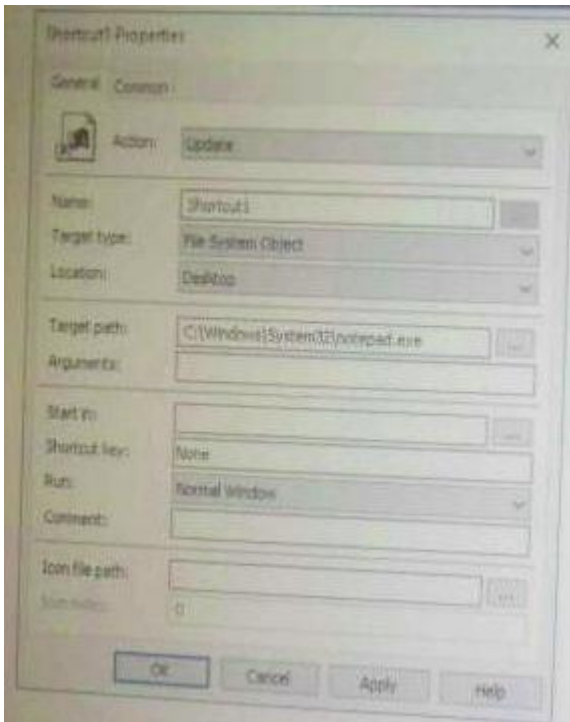
Your network contains an Active Directory domain named contoso.com.

The domain contains the computers configured as shown in the following table.

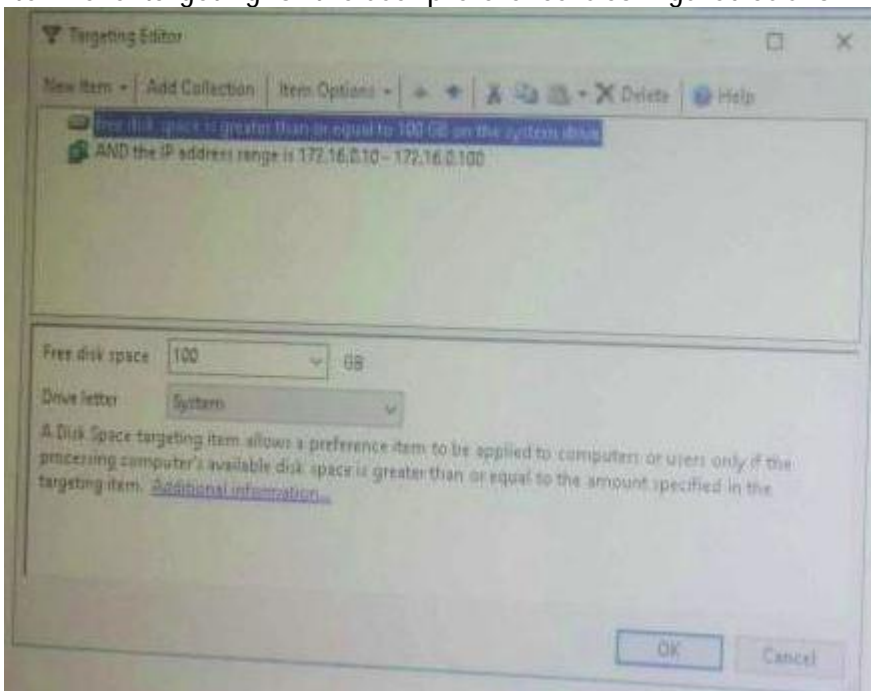
Name	IP address	Free space on volume C
Client1	172.16.0.5	150 GB
Client2	172.16.0.25	50 GB
Client3	172.16.0.95	200 GB

The domain contains a user named User1.

A Group Policy object (GPO) named GPO1 is linked to the domain. GPO1 contains a user preference that is configured as shown in the Shortcut1 Properties exhibit.



Item-level targeting for the user preference is configured as shown in the Targeting exhibit.



For each of the following statements, select Yes if the statement is true. Otherwise, Select No.  
NOTE: Each correct selection is worth one point.

Statements	Yes	No
If User1 signs in to Client1, Shortcut1 will appear on the desktop.	<input type="radio"/>	<input type="radio"/>
If User1 signs in to Client2, Shortcut1 will appear on the desktop.	<input type="radio"/>	<input type="radio"/>
If User1 signs in to Client3, Shortcut1 will appear on the desktop.	<input type="radio"/>	<input type="radio"/>

**Answer:**

Statements	Yes	No
If User1 signs in to Client1, Shortcut1 will appear on the desktop.	<input checked="" type="radio"/>	<input type="radio"/>
If User1 signs in to Client2, Shortcut1 will appear on the desktop.	<input type="radio"/>	<input checked="" type="radio"/>
If User1 signs in to Client3, Shortcut1 will appear on the desktop.	<input type="radio"/>	<input checked="" type="radio"/>

Explanation: Yes > No > No

**NO.4** Your network contains an Active Directory domain named contoso.com.

You have a Group Policy object (GPO) named GPO1. GPO1 is linked to an organizational unit (OU) named OU1.

GPO1 contains several corporate desktop restrictions that apply to all computers.

You plan to deploy a printer to the computers in OU1.

You need to ensure that any user who signs in to a computer that runs Windows 10 in OU1 receives the new printer. All of the computers in OU1 must continue to apply the corporate desktop restrictions from GPO1.

What should you configure?

- A. a user preference and a WMI filter on GPO1.
- B. a computer preference that uses item-level targeting
- C. a computer preference and WMI filter on GPO1
- D. a user preference that uses item-level targeting

**Answer:** D

**NO.5** Note: This question is part of a series of questions that use the same or similar answer choices.

An answer choice may be correct for more than one question in the series. Each question is independent of the other questions in this series. Information and details provided in a question apply only to that question.

Your network contains an Active Directory domain named contoso.com.

You need to limit the number of Active Directory Domain Services (AD DS) objects that a user can create in the domain.

Which tool should you use?

- A. Dsadd quota
- B. Dsmod
- C. Active Directory Administrative Center
- D. Dsacls
- E. Dsamain
- F. Active Directory Users and Computers
- G. Ntdsutil
- H. Group Policy Management Console

**Answer:** A

**NO.6** Your network contains an Active Directory domain named contoso.com.

The domain contains a user named User1 and an organizational unit (OU) named OU1. You create a Group Policy object (GPO) named GPO1. You need to ensure that User1 can link GPO1 to OU1. What should you do?

- A. Modify the security setting of User1.
- B. Add User1 to the Group Policy Creator Owner group.
- C. Modify the security setting of OU1.
- D. Modify the security setting of GPO1.

**Answer:** D

**NO.7** Note: This question is part of a series of questions that present the same scenario. Each question in the series contains a unique solution that might meet the stated goals. Some question sets might have more than one correct solution, while others might not have a correct solution. After you answer a question in this section, you will NOT be able to return to it. As a result, these questions will not appear in the review screen.

You deploy a new Active Directory forest.

You need to ensure that you can create a group Managed Service Account (gMSA) for multiple member servers.

Solution: You configure Kerberos constrained delegation on the computer account of each domain controller.

Does this meet the goal?

- A. Yes
- B. No

**Answer:** B

**NO.8** You have a server named Server1 that runs Windows Server 2016.

You need to configure Server1 as a Web Application Proxy.

Which server role or role service should you install on Server1?

- A. Remote Access
- B. Active Directory Federation Services
- C. Web Server (IIS)
- D. DirectAccess and VPN (RAS)
- E. Network Policy and Access Services

**Answer:** A

**NO.9** Note: This question is part of a series of questions that present the same scenario. Each question in the series contains a unique solution that might meet the stated goals. Some question sets might have more than one correct solution, while others might not have a correct solution. After you answer a question in this section, you will NOT be able to return to it. As a result, these questions will not appear in the review screen.

You have a server named Web1 that runs Windows Server 2016.

You need to list all the SSL certificates on Web1 that will expire during the next 60 days.

Solution: You run the following command.

```
Get-ChildItem Cert:\CurrentUser\My |? { $_.NotAfter -lt (Get-Date).AddDays( 60 ) }
```



Does this meet the goal?

**A.** Yes

**B.** No

**Answer:** B

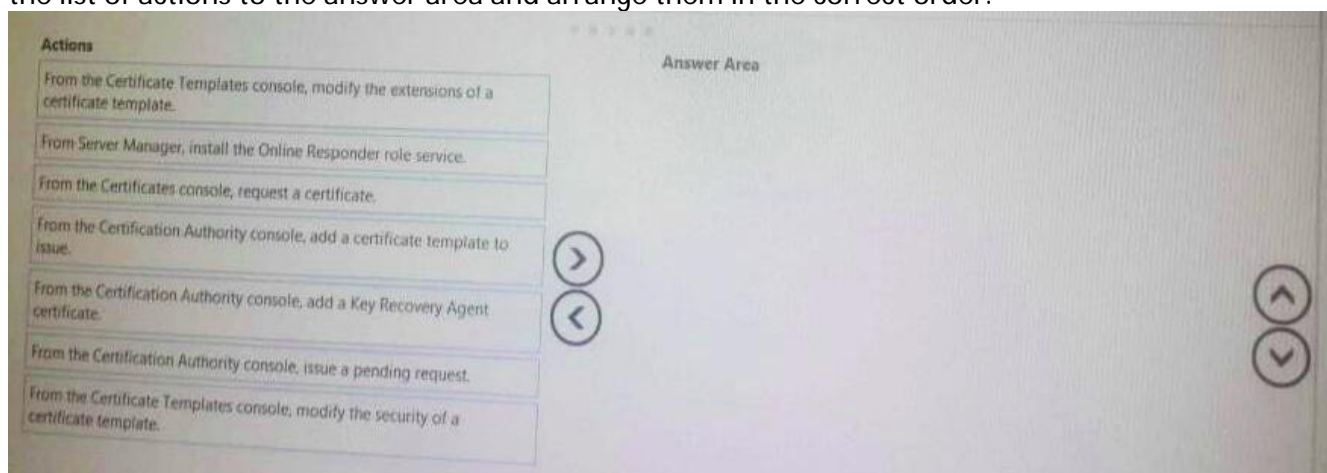
### NO.10 DRAG DROP

You network contains an Active Directory domain named contoso.com. The domain contains an enterprise certification authority (CA).

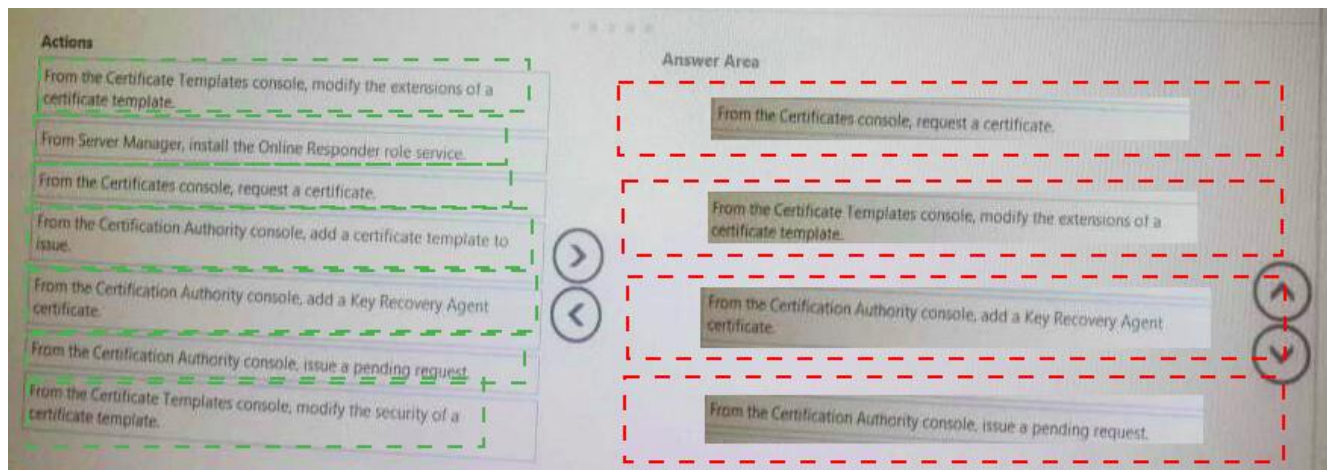
A user named Admin1 is a member of the Domain Admins group.

You need to ensure that you can archive keys on the CA. The solution must use Admin1 as a key recovery agent.

Which four actions should you perform in sequence? To answer, move the appropriate actions from the list of actions to the answer area and arrange them in the correct order.



**Answer:**



**NO.11** Note: This question is part of a series of questions that present the same scenario. Each question in the series contains a unique solution that might meet the stated goals. Some question sets might have more than one correct solution, while others might not have a correct solution. After you answer a question in this section, you will NOT be able to return to it. As a result, these questions will not appear in the review screen.

Your network contains an Active Directory forest named contoso.com. The forest contains a member server named Server1 that runs Windows Server 2016. All domain controllers run Windows Server 2012 R2.

Contoso.com has the following configuration.

```
PS C:\> (Get-ADForest).ForestMode
```

```
Windows2008R2Forest
```

```
PS C:\> (Get-ADDomain).DomainMode
```

```
Windows2008R2Domain
```

```
PS C:\>
```

You plan to deploy an Active Directory Federation Services (AD FS) farm on Server1 and to configure device registration.

You need to configure Active Directory to support the planned deployment.

Solution: You raise the domain functional level to Windows Server 2012 R2.

Does this meet the goal?

**A.** Yes

**B.** No

**Answer:** B

Explanation:

Device Registration requires Windows Server 2012 R2 forest schema (not just domain schema).

### **NO.12** HOTSPOT

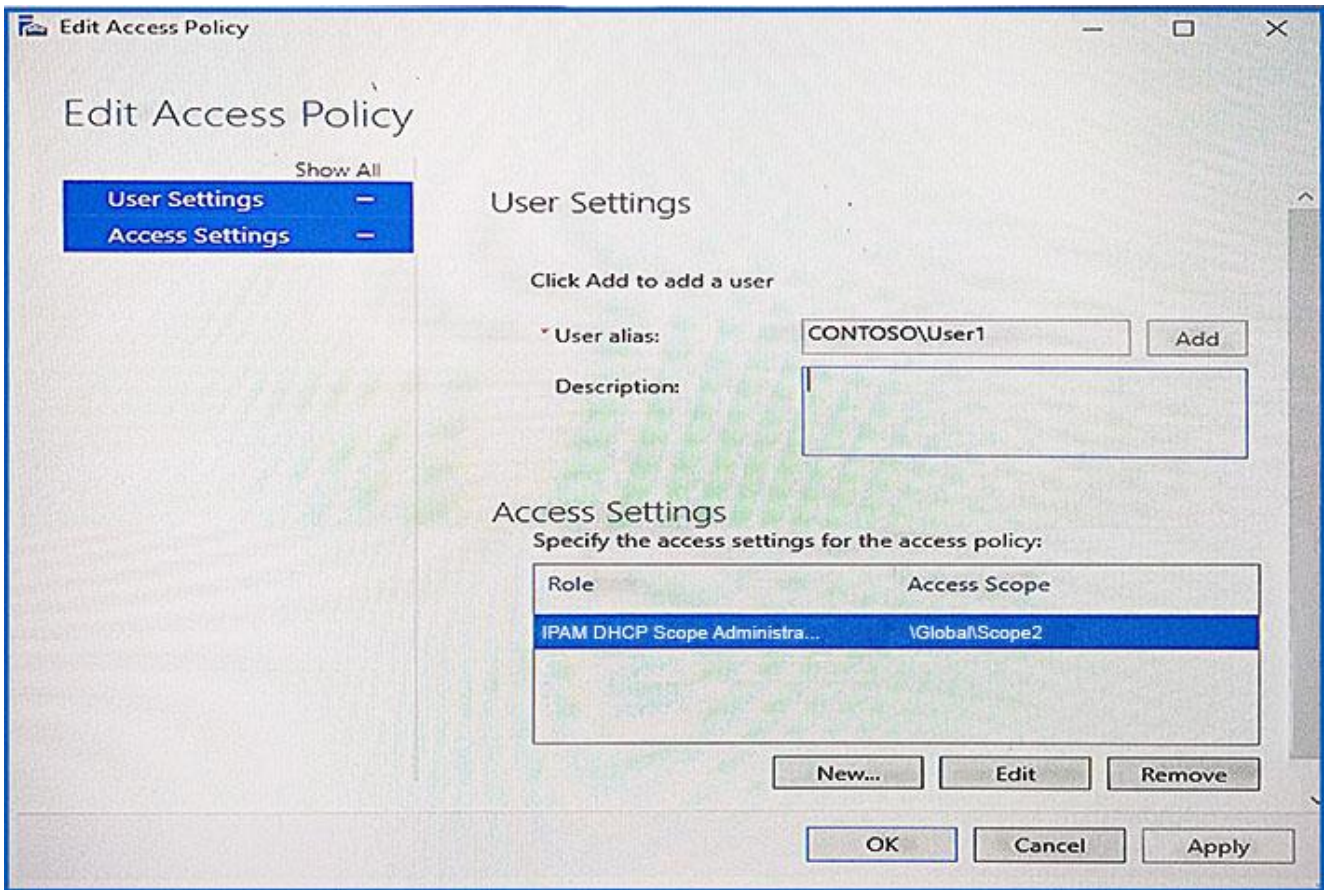
Your network contains an Active Directory domain named contoso.com. The domain contains two servers named Server1 and Server2 that run Windows Server 2016.

Server1 has IP Address Management (IPAM) installed. Server2 has the DHCP Server role installed. The IPAM server retrieves data from Server2.

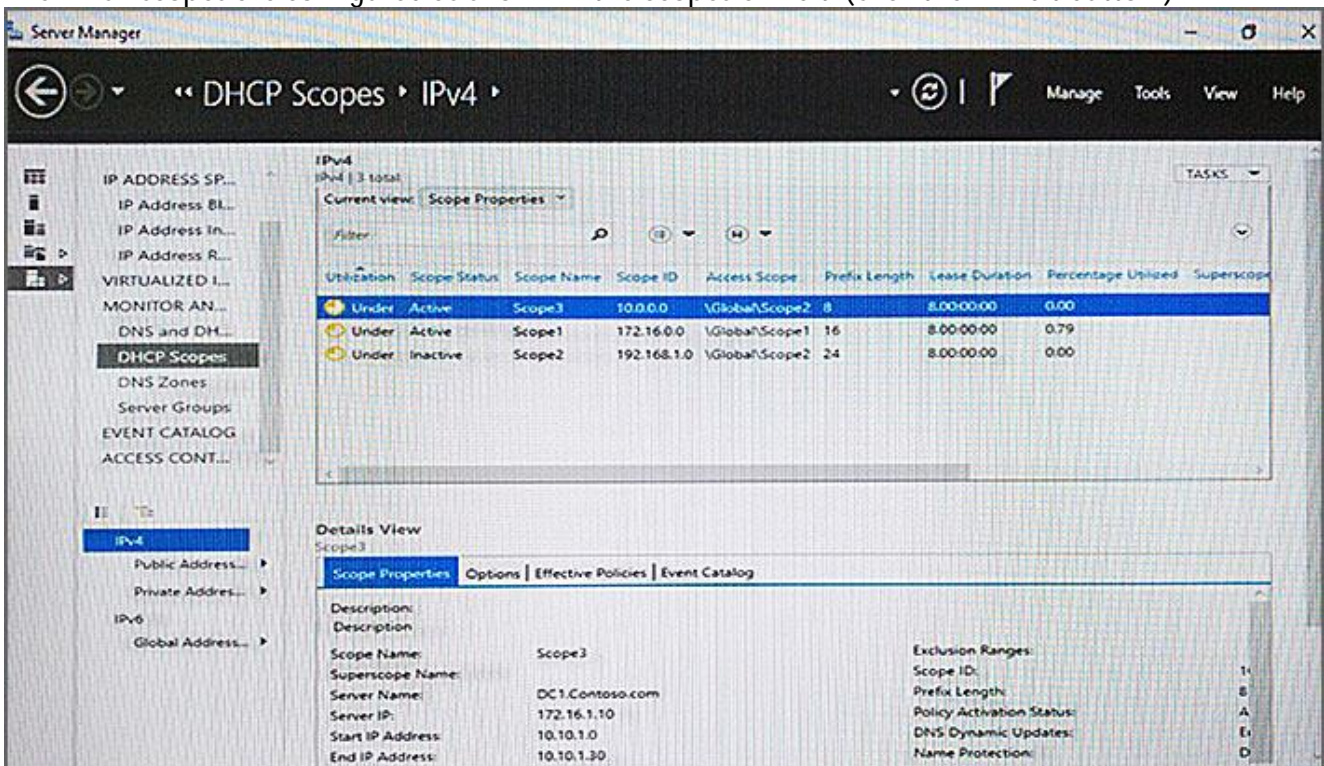
The domain has two users named User1 and User2 and a group named Group1. User1 is the only member of Group1.

Server1 has one IPAM access policy. You edit the access policy as shown in the Policy exhibit. (Click the Exhibit button.)





The DHCP scopes are configured as shown in the Scopes exhibit. (Click the Exhibit button.)



For each of the following statements, select Yes if the statement is true. Otherwise, select No.

## Answer Area

Statements	Yes	No
User1 can modify the description of Scope1.	<input type="radio"/>	<input type="radio"/>
User2 can modify the description of Scope1.	<input type="radio"/>	<input type="radio"/>
User1 can modify the description of Scope2.	<input type="radio"/>	<input type="radio"/>

*Answer:*

## Answer Area

Statements	Yes	No
User1 can modify the description of Scope1.	<input type="radio"/>	<input checked="" type="radio"/>
User2 can modify the description of Scope1.	<input type="radio"/>	<input checked="" type="radio"/>
User1 can modify the description of Scope2.	<input checked="" type="radio"/>	<input type="radio"/>