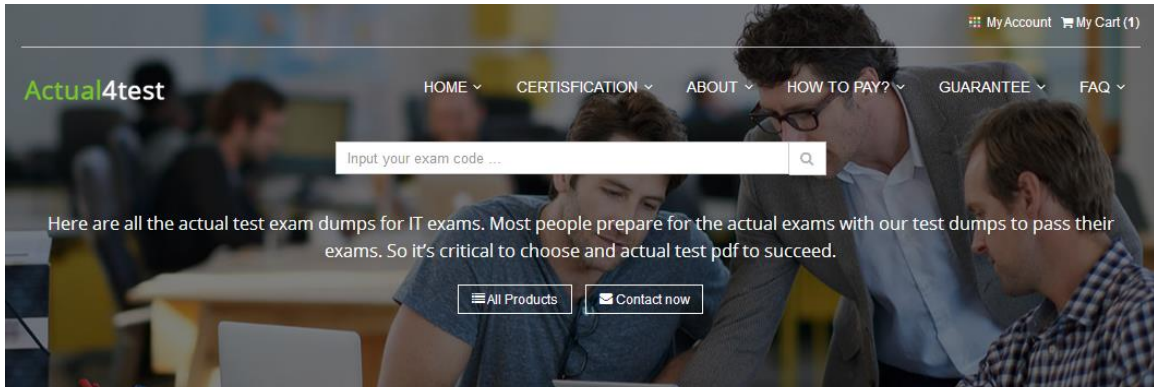


Actual4Test



My Account My Cart (1)

Actual4test

HOME ▾ CERTIFICATION ▾ ABOUT ▾ HOW TO PAY? ▾ GUARANTEE ▾ FAQ ▾

Input your exam code ...

Here are all the actual test exam dumps for IT exams. Most people prepare for the actual exams with our test dumps to pass their exams. So it's critical to choose and actual test pdf to succeed.

All Products Contact now



QUALITY AND VALUE

Actual4test Practice Exams are written to the highest standards of technical accuracy, using only certified subject matter experts and published authors for development - no all dumps.



TESTED AND APPROVED

We are committed to the process of vendor and third party approvals. We believe professionals and executives alike deserve the confidence of quality coverage these authorizations provide.



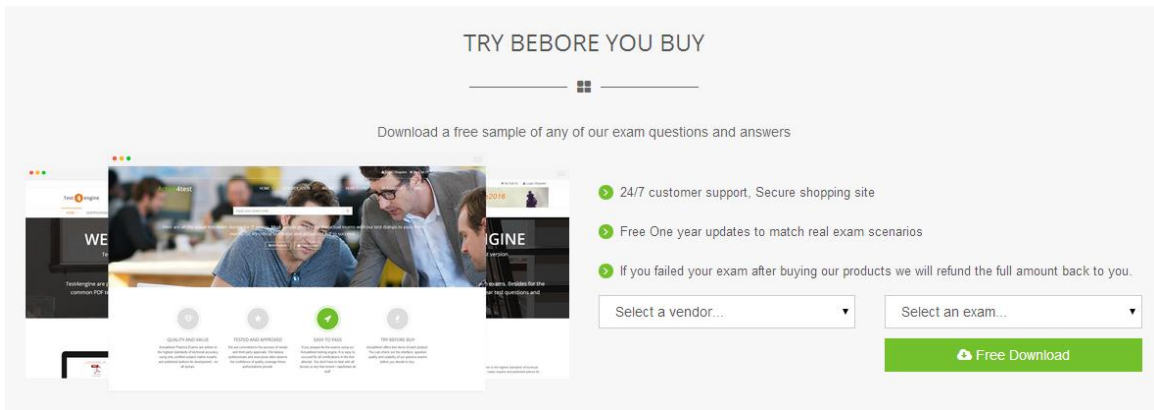
EASY TO PASS

If you prepare for the exams using our Actual4test testing engine, it is easy to succeed for all certifications in the first attempt. You don't have to deal with all dumps or any free torrent / rapidshare all stuff.



TRY BEFORE BUY

Actual4test offers free demo of each product. You can check out the interface, question quality and usability of our practice exams before you decide to buy.



TRY BEFORE YOU BUY

Download a free sample of any of our exam questions and answers

- 24/7 customer support. Secure shopping site
- Free One year updates to match real exam scenarios
- If you failed your exam after buying our products we will refund the full amount back to you.

Select a vendor... Select an exam...

Free Download

<http://www.actual4test.com>

Actual4test - actual test exam dumps-pass for IT exams

Exam : **300-180**

Title : Troubleshooting Cisco Data
Center Infrastructure

Vendor : Cisco

Version : DEMO

NO.1 Which three send and receive locations an administrator can find the root cause for a network issue on the Cisco UCS domain? (Choose three.)

- A. between fabric interconnect and LAN or SAN
- B. between the FEX and fabric interconnect
- C. between each FEX on the Cisco UCS chassis
- D. between the host and FEX
- E. between fabric interconnects within the domain
- F. between the Cisco UCS chassis and system interconnects

Answer: A,B,D

NO.2 What can prevent you from adding an interface to a pre-existing port-channel on a CISCO Nexus N7K device?

- A. The port-channel is In LACP passive mode
- B. The interface already assigned to a different port-channel,
- C. The interface has been allocated to a different VOC
- D. no shutdown was issued on the interface.

Answer: B

NO.3 Refer to the exhibit.

```
N7K-A#  
  
feature otv  
otv site-identifier 10  
interface overlay 1  
  otv control-group 239.1.1.1  
  otv data-group 239.1.1.0/29  
  otv join-interface ethernet 2/1  
  otv extend-vlan 5-10  
  no shutdown  
  
N7K-B#  
  
feature otv  
otv site-identifier 20  
interface overlay 1  
  otv control-group 239.1.1.1  
  otv data-group 239.1.1.0/29  
  otv join-interface ethernet 2/1  
  otv extend-vlan 5-10  
  no shutdown
```

Which two commands are missing to enable OTV between N7K-A and N7K-B? (Choose two.)

- A. otv site-vlan on both N7Ks
- B. create vlan 5-10
- C. enable virtual port-channel on vlan 5-10
- D. enable eigrp on both N7Ks
- E. enable hsrp feature

Answer: A,B

NO.4 While updating firmware in a Cisco UCS environment, what will the Cisco UCS Manager do?

- A. show you all versions available on Cisco.com
- B. show you all versions downloaded to the Cisco UCS Manager
- C. show you only versions that are supported in your environment
- D. show you only versions that you selected to show
- E. show you old and new versions from your download

Answer: C

NO.5 Which two statements about the Cisco UCS FSM are true? (Choose two.)

- A. The FSM is run on the DME.
- B. The FSM is a workflow model with a finite number of stages.
- C. The FSM is a process to upgrade the firmware.
- D. Cisco UCS has two FSMs.
- E. The FSM is used to observe the physical, logical, and virtual components on the Cisco UCS.

Answer: A,B

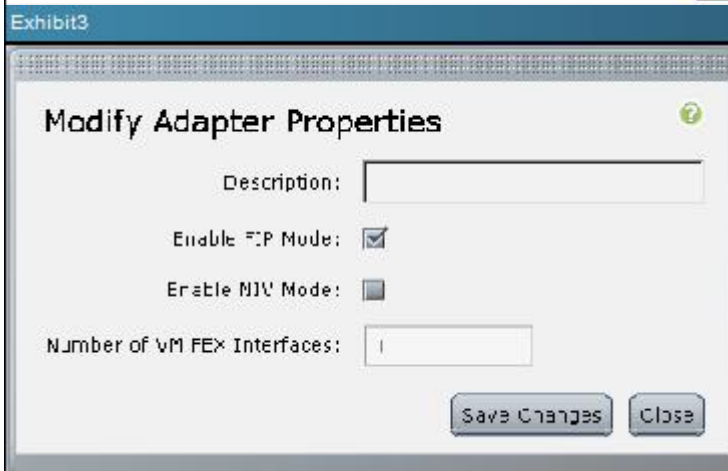
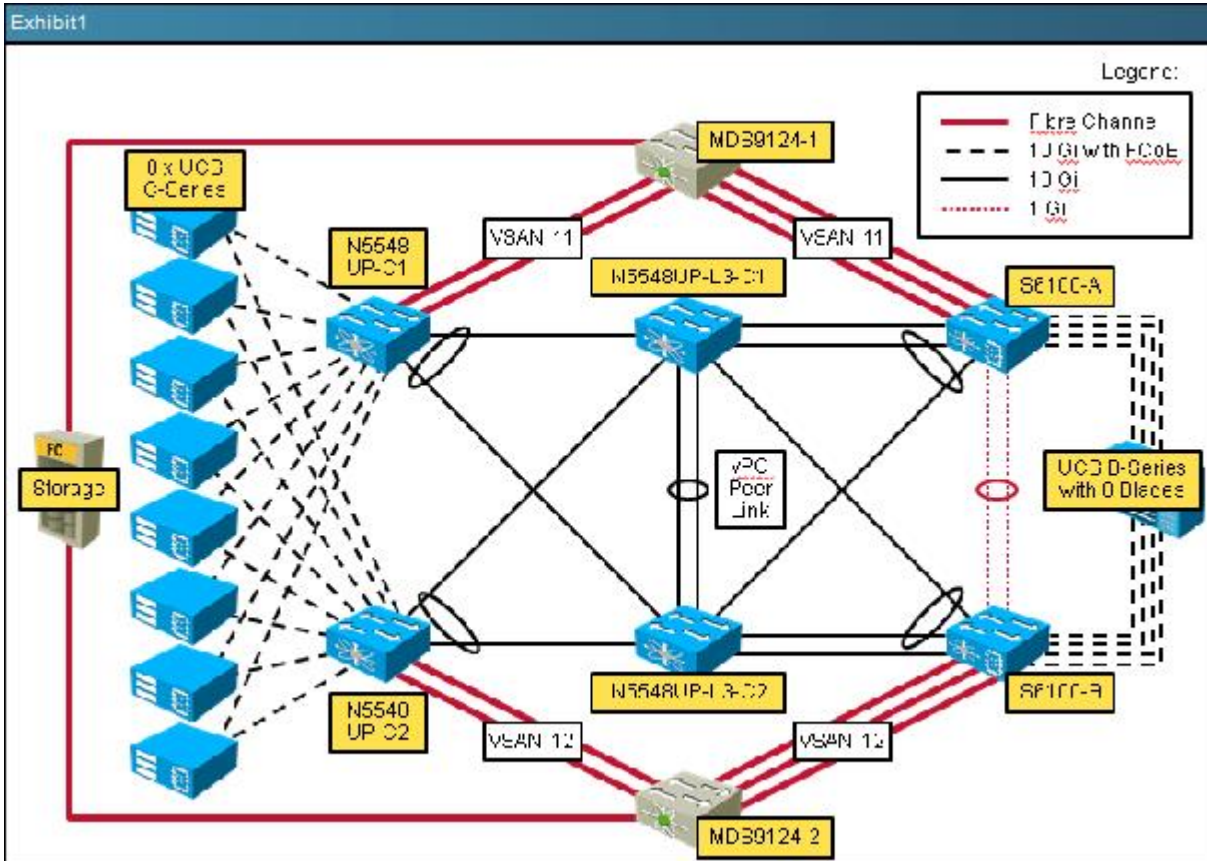
NO.6 Which tools can assist in the troubleshooting of FC-0 issues? (Choose three.)

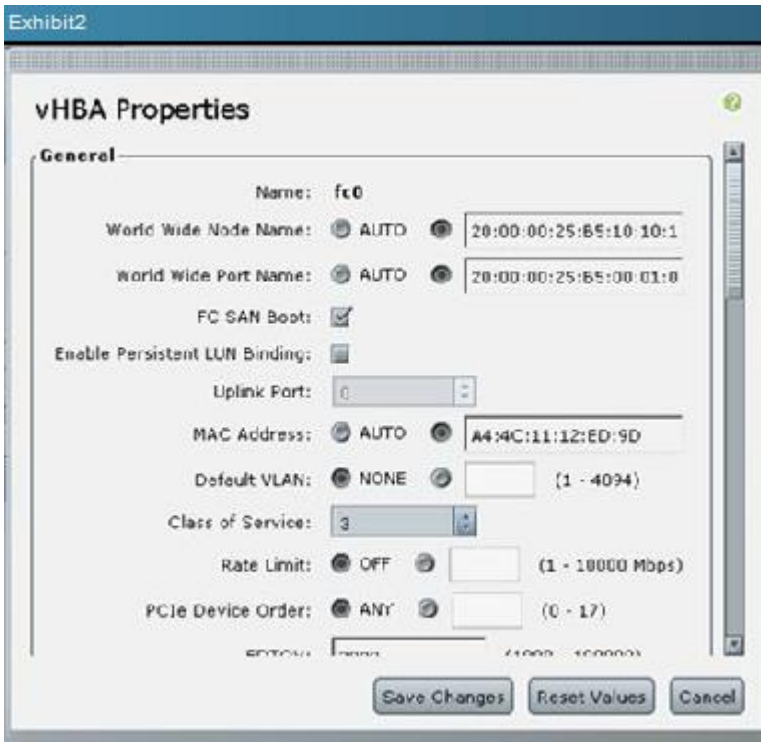
- A. FC analyzer
- B. SPAN
- C. Device Manager
- D. show interface fc1/1 optical-power-budget
- E. PAA
- F. a portable protocol analyzer

Answer: A,C,F

NO.7

The screenshot shows two windows from an exam application. The top window is titled "Instructions" and contains a list of four bullet points: "Click on the Exhibit1 tab to access the topology the Cisco UCS C-Series server is a member.", "To access the multiple-choice questions, click on the numbered boxes on the left of the top panel.", "There are four multiple-choice questions with this task.", and "Refer to the included per-question screenshot for reference." The bottom window is titled "Scenario" and contains the text: "In this scenario, you will answer questions about Cisco UCS C-Series server configuration based on screenshots from the Cisco IMC GUI."





Refer to Exhibit 3. Which two statements are true if the Enable NIV Mode checkbox is selected on a Cisco VIC? (Choose two.)

- A. It enables N-Port Interface Virtualization on the VIC
- B. vNICs can fail over to another vNIC if there are communication problems
- C. NIV mode is required for FCoE
- D. vNICs can be assigned to a specific channel

E. It allows for the creation of up to 12 vHBAs

Answer: B,E

NO.8 Refer to the exhibit.

The **show interface brief** command produces
fc slot/port is down (Error disabled - Possible port channel misconfiguration)

What are three valid commands to troubleshoot why the port is disabled? (Choose three.)

- A. show san-port-channel compatibility-parameters
- B. show port info internal interface fc <slot/port>
- C. show san-port-channel internal info
- D. show port internal event-history interface fc <slot/port>
- E. show interface san-port-channel detail all
- F. show san-port-channel internal event-history all
- G. show internal interface event-history all

Answer: A,D,F

NO.9 Refer to the exhibit.

```
switch#(config-if)# show interface ethernet 1/1
Ethernet1/1 is down (SFP validation failed)
switch#(config-if)# show interface status
```

| Port | Name | Status | Vlan | Duplex | Speed | Type |
|--------|------|-----------|------|--------|-------|------|
| Eth1/1 | -- | sfpInvali | 1 | full | 1000 | 10g |

You connect Cisco Nexus 5600 Series switches to Cisco Nexus 2200 Series Fabric Extenders by using FET-10G SFPs. Which command resolves the error that is shown in the exhibit?

- A. switch#(config-if)# switchport mode dot1q tunnel trunk
- B. switch#(config-if)# switchport mode fex-fabric
- C. switch#(config-if)# switchport mode dynamic desirable
- D. switch#(config-if)# switchport mode fabricpath

Answer: B

NO.10 Which two commands check for DIMM errors in a Cisco UCS environment? (Choose two.)

- A. UCS-TEST/chassis#show error-recovery
- B. UCS-TEST/chassis/server/memory-array#show stats
- C. UCS-TEST/chassis/server#show execute-disable
- D. UCS-TEST/chassis/server/memory-array #show block
- E. UCS-TEST/chassis/server#show memory-array detail
- F. UCS-TEST/chassis/server#show error-recovery

Answer: B,E

NO.11 Refer to the exhibit. A system administrator reviews the VIF paths and discovers an error. What is the cause of the error?

| Name | Adapter Port | FEX Host Port | FEX Network Port | FI Server Port | vNIC | FI Uplink | Link State | State Qual |
|----------|--------------|---------------|------------------|----------------|------|-----------|------------|-------------------------------|
| Path A/1 | PC-1390 | PC-1025 | PC-1025 | A/0/1025 | 0 | unpinned | Error | Bound Physical Interface Down |
| Path A/2 | PC-1391 | PC-1025 | PC-1025 | A/0/1025 | 2 | unpinned | Up | |
| Path B/1 | PC-1380 | PC-1153 | PC-1153 | B/0/1153 | 1 | unpinned | Error | Bound Physical Interface Down |
| Path B/2 | PC-1381 | PC-1153 | PC-1153 | B/0/1153 | 3 | unpinned | Up | |

- A. The server has no connection to the SAN.
- B. The server is still booting over SAN.
- C. The server is still booting over iSCSI.
- D. The server has the VIC with errors and needed to make an RMA.
- E. The switch that is connected the fabric interconnect has a port that is unavailable.

Answer: C

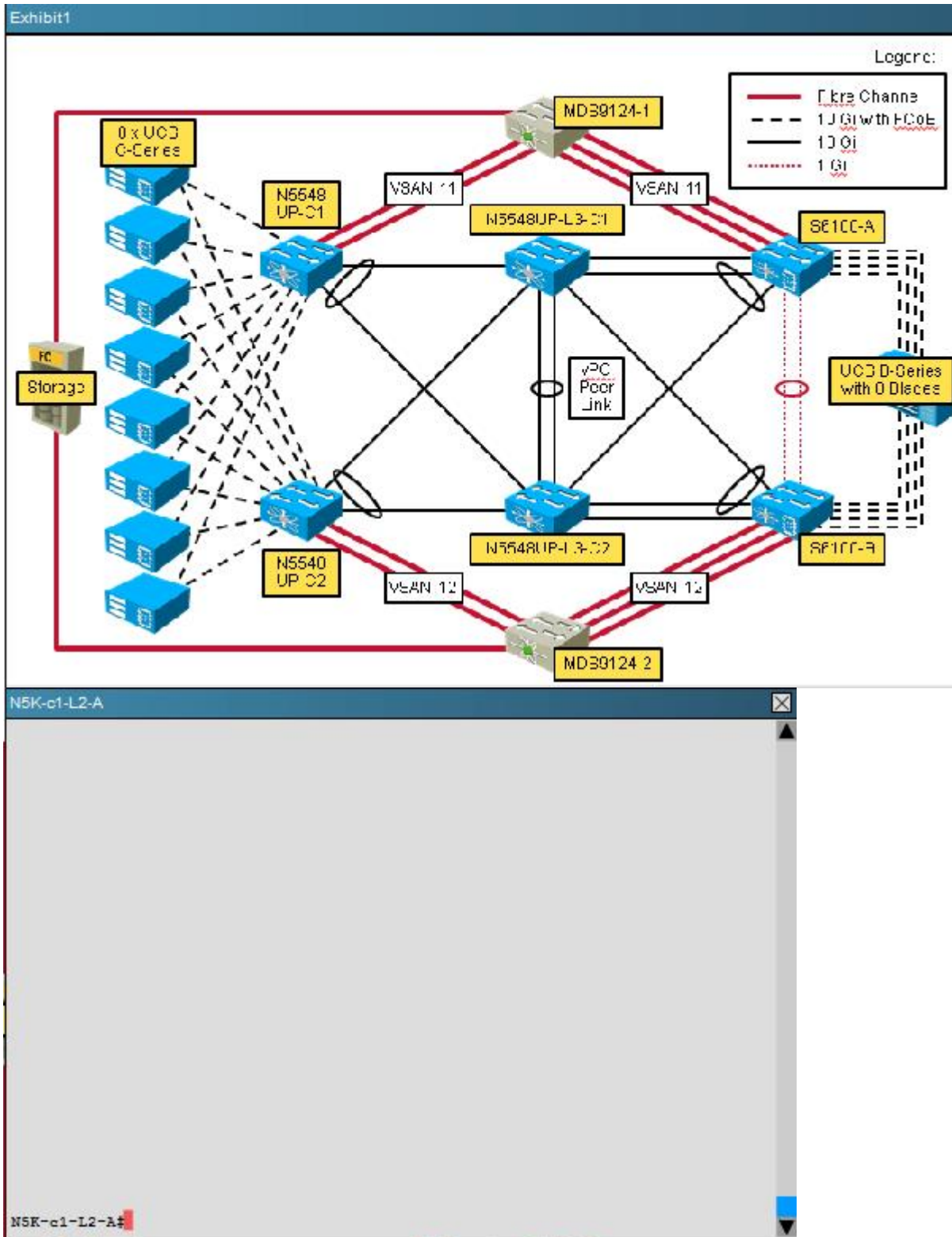
NO.12

Instructions

- Enter NX-OS commands on the device to answer multiple-choice questions.
- **THIS TASK DOES NOT REQUIRE DEVICE CONFIGURATION.**
- From Exhibit 1, click on the Cisco Nexus 5548UP switch named N5548UP-C1 to gain access to the console of the switch.
- There is no access to configuration mode.
- To access the multiple-choice questions, click on the numbered boxes on the left of the top panel.
- There are four multiple-choice questions with this task. Be sure to answer all four questions before selecting the Next button.
- This is a simulation, and not all NX-OS commands are implemented.

Scenario

In this item, you will use the NX-OS CLI to answer questions about the FCoE configuration on a Cisco Nexus 5548UP.



What is the reason that no C-Series servers can access Fibre Channel storage from this Cisco Nexus 5548UP switch?

- A. Zoning mode mis-match with the MDS 9124
- B. There are no active Fibre Channel interfaces
- C. VSAN mis-match on Fibre Channel interfaces
- D. None of the virtual fibre channel interfaces are configured

Answer: C

NO.13 What is the correct configuration for interface Ethernet 1/1 of a Cisco Nexus 5000 Series Switch when it is a member of port channel 101 connected to FEX 101?

- A.** interface Ethernet1/1
switchport mode trunk
switchport trunk native vlan 10
switchport trunk allowed vlan 20,30
fex associate 101
channel-group 101
- B.** interface Ethernet1/1
switchport mode fex-fabric
channel-group 101
- C.** interface Ethernet1/1
switchport mode access
switchport access vlan 10
fex associate 101
channel-group 101
- D.** interface Ethernet1/1
switchport mode fex-fabric
fex associate 101
channel-group 101

Answer: D

NO.14 You receive a priority 1 trouble ticket that there is OSPF route instability in the data center core Cisco Nexus 7018 Switches. Which command is useful to help validate a theory that hello packets are being throttled?

- A.** N7018# show class-map interface control-plane
- B.** N7018# show policy-map interface control-plane
- C.** N7018# show service-policy interface control-plane
- D.** N7018# show copp status
- E.** N7018# show copp statistics
- F.** N7018# show control-plane class copp-system-class-critical

Answer: B

NO.15 You use external storage to SAN boot Cisco UCS B-Series Blade Servers. The servers also have internal disks. You discover that one of the servers fails to boot from the SAN. Which two options do you verify? (Choose two.)

- A.** the cabling
- B.** the zoning
- C.** the LUN masking on the storage array
- D.** the boot order of the blade servers
- E.** the blade power consumption

Answer: B,C

NO.16 Refer to the exhibit.

```

eth0      Link encap:Ethernet  HWaddr 00:05:9B:28:F6:00
          inet addr:10.68.68.138  Bcast:10.255.255.255  Mask:255.255.255.128
          UP BROADCAST RUNNING MULTICAST  MTU:1500  Metric:1
          RX packets:106649126 errors:0 dropped:0 overruns:0 frame:0
          TX packets:65396757 errors:0 dropped:0 overruns:0 carrier:0
          collisions:0 txqueuelen:1000
          RX bytes:36077248749 (33.5 GiB)  TX bytes:20518952142 (19.1 GiB)
          Base address:0x8020 Memory:fcaa0000-fcac0000

eth1      Link encap:Ethernet  HWaddr 00:05:9B:28:F6:01
          BROADCAST MULTICAST  MTU:1500  Metric:1
          RX packets:0 errors:0 dropped:0 overruns:0 frame:0
          TX packets:0 errors:0 dropped:0 overruns:0 carrier:0
          collisions:0 txqueuelen:1000
          RX bytes:0 (0.0 b)  TX bytes:0 (0.0 b)
          Base address:0x8000 Memory:fca40000-fca60000

eth2      Link encap:Ethernet  HWaddr 00:05:9B:28:F6:03
          UP BROADCAST RUNNING PROMISC ALLMULTI MULTICAST  MTU:9216  Metric:1
          RX packets:94193864 errors:0 dropped:0 overruns:0 frame:0
          TX packets:67795040 errors:0 dropped:0 overruns:0 carrier:0
          collisions:0 txqueuelen:1000
          RX bytes:34700123260 (32.3 GiB)  TX bytes:44609130236 (41.5 GiB)
          Base address:0x6020 Memory:fc8a0000-fc8c0000

vlan4047  Link encap:Ethernet  HWaddr 00:05:9B:28:F6:04
          inet addr:127.9.0.1  Bcast:127.9.255.255  Mask:255.255.0.0
          UP BROADCAST RUNNING  MTU:1496  Metric:1
          RX packets:5210 errors:0 dropped:0 overruns:0 frame:0
          TX packets:14617 errors:0 dropped:0 overruns:0 carrier:0
          collisions:0 txqueuelen:0
          RX bytes:2259502 (2.1 MiB)  TX bytes:15350935 (14.6 MiB)

```

Which interface is configured as a management interface for the Cisco UCS chassis?

- A. eth0
- B. vlan4047
- C. eth1
- D. eth2

Answer: A

NO.17 Which names are reserved when custom roles are created in Cisco UCS Manager RBAC?

- A. network-admin, network-operator, vdc-admin, vdc-operator, and server-admin
- B. cisco, cisco123, cisco-operator, cisco-admin, and root
- C. ucs-admin, ucs-operator, server-admin, server-operator, and cisco-admin
- D. ucs, ucs123, server-admin, server-operator, and sysroot

Answer: A

NO.18 A customer is configuring a network control policy in a Cisco UCS domain. The network control policy configures the network control settings for the Cisco UCS domain, including which three of these? (Choose three.)

- A. how the VIF behaves if no uplink port is available in end-host mode
- B. the action that the Cisco UCS Manager takes on the remote Ethernet interface, vEthernet interface, or vFibreChannel interface when the associated border port fails
- C. Layer 2 switching on the fabric interconnect
- D. whether MAC registration occurs on a per-vNIC basis or for all VLANs
- E. the end-host mode setting on the I/O module

Answer: A,B,D

NO.19 Which three statements are true about the show cfs merge status name command? (Choose three.)

- A. In a successful merge, all switches in the fabric are shown separately.
- B. The command shows the complete Cisco Fabric Services region database.
- C. The command shows the merge status in all valid VSANs on the switch.
- D. The merge master is selected based on the highest sWWN in the fabric.
- E. The merge master is selected based on the lowest sWWN in the fabric.
- F. In a successful merge, all switches are shown in a local fabric.

Answer: C,E,F

NO.20 Which description of a core file is true?

- A. It is generated by a system failure.
- B. It is generated by a process failure.
- C. It is generated by a component failure.
- D. It is generated by a hardware failure.

Answer: B